

Advanced Reporting with Novell® ZENworks® Reporting Server: More than Asset Management

Bruce McDowell

Technical Services Consultant
McDowell Consulting LLC/bruce@consultbruce.com

Christina Chamberlain

Technical Sales Specialist | Endpoint Management
Novell Inc./cchamberlain@novell.com

Brad Welch

Sr. Solution Advisor
SAP/brad.welch@sap.com

The Novell logo is displayed in a bold, red, sans-serif font. The word "Novell" is followed by a small registered trademark symbol (®).

Presenting Today...

- Bruce McDowell
 - Member of founding team for Tally Systems
 - Technical Sales Specialist and Product Manager for Novell
 - Consultant on asset and license management
 - Lead for redesign of ZENworks Reporting Server universe
- Christina Chamberlain
 - Technical Sales Specialist for Novell
 - Consultant and Training Lead at Tally Systems
- Brad Welch
 - Sr. Solutions Advisor for SAP BusinessObjects

Agenda

- Overview of ZENworks Reporting Server
- Predefined Reports
- The ZENworks Reporting Server Universe
- Creating Custom Reports



Introduction

Novell ZENworks Reporting Server is the new engine that drives predefined and custom reports for the Novell ZENworks 10 family. This session will provide an overview and tour of the Novell ZENworks Reporting Server universe — the foundation for creating reports for inventory, asset management, and other capabilities of Novell ZENworks Configuration Management. We'll cover how to lay out and filter reports, as well as some of the formatting features of the BusinessObjects Engine that powers the engine.

Overview

A series of horizontal lines in various shades of blue and cyan, located at the bottom of the slide.

What is ZENworks Reporting Server?

- ZENworks Reporting Server is the unified reporting engine for all products under the ZENworks Configuration Management umbrella
- Currently includes:
 - ZENworks Configuration Management
 - ZENworks Patch Management
 - ZENworks Asset Management
- As new features are added to ZENworks Configuration Management, ZENworks Reporting Server will expand
 - Integrated endpoint security
 - Linux management

ZENworks Reporting in Transition

- Some reporting remains available through the ZENworks Control Center
 - ZENworks Configuration Management
 - > Inventory predefined and custom reports
 - > Detailed Hardware/Software Inventory report
 - ZENworks Asset Management
 - > Predefined reports prior to version 10.2
- Intent is to migrate predefined reports from ZENworks Control Center to ZENworks Reporting Server
 - No defined schedule for this migration



Predefined Reports

The slide features a solid blue background. At the bottom, there are several horizontal lines of varying shades of blue and white, creating a decorative border.

Predefined Reports

- Built from the same elements of the Universe used to build custom reports
- Various configuration options possible
 - Changes locked, simple output
 - User selected parameters
 - Template, any changes possible
- Many predefined reports shipped with ZENworks Reporting Server
- Your custom reports may be saved as predefined
- May also be exported for sharing in another server

Cool Solutions ZRS Community

Novell.
+ MENU

Cool Solutions Home

The Freezer

Novell Forums

Cool Tools

Cool Blogs

Cool Wiki

Job Board

Novell Museum

Knowledge Partners

Subscribe

Rewards

Get Involved >

Other Cool Stuff >

-

Site Help

Talk to Us

Novell Home

Communities Home

Technical Support

Technical Training

ZENworks Reporting Server- Custom Report Library

ZENworks Reporting Server (ZRS) is the Business Objects-based reporting engine in ZENworks 10+ products. ZRS ships with numerous predefined reports and while we will continue to add more in new releases, the real power of ZRS comes from the custom reporting capability.

With more than 1,000 reporting and filtering data objects, all clearly labeled and organized in folders, ZENworks administrators can create reports to answer questions about almost anything in the database. And unlike many of our competitors, you don't need to be a SQL guru or have intimate knowledge of the database schema to produce very powerful reports.

The purpose of this library is to allow Novell employees, partners and customers to post cool custom reports for the community to download, import and use in their ZENworks systems. All custom reports posted in the Library can be downloaded, imported and used as is or changed to suit your needs. And remember, if you come up with a cool riff on one of these reports, post it.

To contact the ZRS Custom Reports librarian with comments or ideas, drop a note to zrs.community.feedback@novell.com.

Date ▼	Title	File Name
23-Oct-2009	The Last Scan History Report	Last Scan History Report.zip
23-Oct-2009	The Software Collection Members Report	Software Collection Members Report.zip
21-Oct-2009	Windows 7 System Readiness Report	Windows_7_System_Readiness_Report.zip

[+ Request a Sales Call](#)
[+ 800-529-3400](#)

Search Hide

ZRS - Library Articles Hide

[+ Exporting a ZRS Report](#)

[+ Importing a ZRS Report](#)

[+ More Articles](#)

[+ ZRS Custom Reports Library Home](#)

My Links Hide

[+ Groups](#)

[+ Cool Solutions](#)

[+ Recent posts](#)

[+ Site map](#)

[+ News aggregator](#)

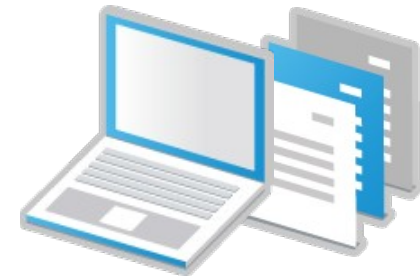
Popular Content Hide

Last viewed:



Demonstration of Predefined Reports

- Predefined reports shipped with ZENworks Reporting Server
- Predefined reports imported from Cool Solutions community



The ZENworks Reporting Server Universe

The slide features a solid blue background. In the center, the title 'The ZENworks Reporting Server Universe' is written in a white, sans-serif font. At the bottom of the slide, there are several horizontal lines of varying shades of blue and white, creating a decorative, layered effect.

BusinessObjects Enterprise Engine






- ZENworks Reporting Server is based on the SAP BusinessObjects Enterprise reporting engine
- Separate installation from ZENworks Configuration Management
 - May be installed on a separate server
 - Installers available for Windows / Linux
- Separate web-based interface for creating and running reports
- Link from ZENworks Control Center
- Opens new browser tab/window

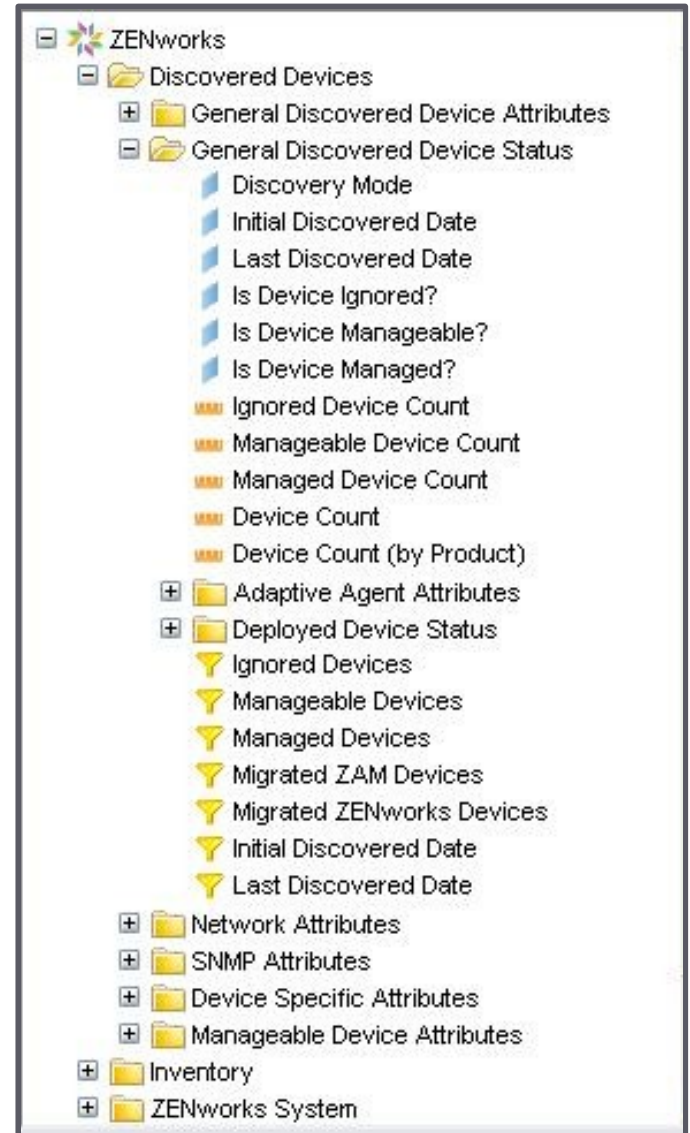


What is a Universe?

- The Universe defines the objects that are available to build custom and predefined reports
- Removes the need for the end-user to understand the underlying database schema
 - Schema objects may be “moved around,” renamed, combined and even repeated in different places
- Presents an opportunity to guide report creation based on the arrangement of elements
 - “Line of Sight” reporting: if you're in one area of the universe to create a report, you shouldn't have to hop around to other parts of the universe to find objects appropriate to your task

Elements of the Universe

-  **Classes and subclasses**
 - Creates a hierarchy
-  **Dimensions**
 - Static data objects
-  **Details**
 - Data subordinate to dimensions
-  **Measures**
 - Calculated data
-  **Filters**
 - Filtered data



The ZRS Universe

- Six current main classes of data
 - Discovered Devices: data from discovery tasks
 - Inventory: hardware/software data returned by periodic inventory scans
 - ZENworks System: information about the ZENworks installation ***
 - Bundles and Policies ***
 - Patch Management ***
 - Asset Management
- Enhancements in the more recent shipments are significant



Class	10.2	10.1
Discovered	135	135
Inventory	446	445
ZENworks System	142	129
Bundles & Policies	73	67
Patch Management	79	46
Asset Management	798	359
Total	1673	1181

*** All reporting in ZRS for these areas

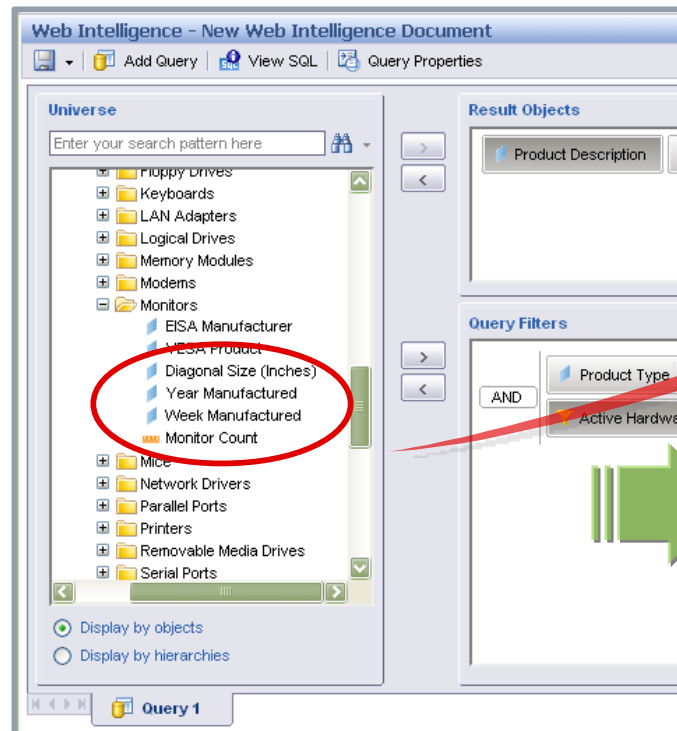
Drag-and-Drop SQL Query Generation Patented Technology

Need to report on *monitors*, by *size*, and *when they were made*?

The screenshot displays the 'Web Intelligence - New Web Intelligence Document' interface. On the left, the 'Universe' pane shows a hierarchical tree of data objects. A red circle highlights the objects 'Diagonal Size (Inches)', 'Year Manufactured', and 'Week Manufactured'. A red arrow points from this circle to the 'Query Filters' pane on the right. The 'Query Filters' pane shows a filter for 'Product Type: In List' set to 'Monitor'. The 'Result Objects' pane at the top right contains 'Product Description', 'Diagonal Size (Inches)', 'Year Manufactured', and 'Monitor Count'. The interface also includes a search bar, navigation buttons, and a 'Run Query' button.

Drag-and-Drop SQL Query Generation Patented Technology (cont.)

Need to report on *monitors, by size, and when they were made?*



```

SELECT
  Product1.Manufacturer , ' ' ,
  Product1.Product , ' ' ,
  Product1.Model),
  Monitor1.DiagonalSize,
  Monitor1.YearManufactured,

  COUNT( (Monitor1.ComponentOID) )

FROM
  NC_Monitor Monitor1 RIGHT OUTER JOIN
  NC_Component Component1 ON
  (Monitor1.ComponentOID=Component1.ComponentOID)

  RIGHT OUTER JOIN NC_Product Product1
  ON (Product1.ProductOID=
  Component1.ProductAlias)

WHERE
  ( Component1.WorkstationOID IS NOT NULL)
  
```

Demonstration of Custom Reporting

- Creating custom reports

-  Laying out fields

-  Filtering

-  Formatting



Configuration

A series of horizontal lines in various shades of blue and cyan, located at the bottom of the slide.

Installation Options

- Requirements
 - Primary Server on Windows 2003 SP1 or SUSE® Linux Enterprise Server 10
 - 3 GB RAM, 5.6 GB free disk space
 - Ports 3306, 6400, 6410, and 6420
- As part of initial install
- Manual install
 - GUI: `setup.exe -b`
 - Command line (requires DVD or ISO):
`ZENworks_installation_path\novell\zenworks\bin\
novell-zenworks-configure.bat -c InstallBOE`



User Rights

- Execute/Publish – limited rights
 - Schedule documents
 - Manage historical report instances
- Create/Delete – comprehensive rights
 - Includes Execute/Publish rights
 - Create, modify or delete documents and folders
 - Predefined Reports folder – schedule, view, and manage document instances only
- ZENworks Configuration Management Administrator default rights
 - Execute/Publish on Predefined Reports folder
 - Create/Delete on Custom Reports folder



Assigning Rights to Users

- Select user
 - Add | Reporting Rights
 - Select folders or reports to assign rights to
 - Select reporting rights
 - > Create/Delete
 - > Execute/Publish



Synchronize!

- Configurations Tab > Reporting Services > Folder Sync Schedule

The screenshot shows a configuration window titled "Folder Sync Schedule" with a close button (X) in the top right corner. Below the title bar, there is a description: "Configuration of settings related to folder sync performed by the Business Objects Enterprise Servers".

Below the description is a section titled "Folder Sync" with an expand/collapse arrow (upward arrow) in the top right corner. This section contains the following text and input fields:

Schedule Sync Time days, hours, minutes

At the bottom of the dialog box, there are four buttons: "OK", "Apply", "Reset", and "Cancel".

Tips and Tricks

A series of horizontal lines in various shades of blue and cyan, located at the bottom of the slide.

Preferences



My initial view is...

- Custom Reports or Predefined Reports folder



My default navigation view is...

- Set on the folder



When I close my browser window...

- Set to Always log me off InfoView

Resources

- ZENworks Configuration Management
 - System Reporting Reference
 - www.novell.com/documentation/zcm10
- Novell Cool Solutions ZRS Community
 - <http://www.novell.com/communities/cool solutions/zrslibrary>
- BusinessObjects Enterprise
 - support.businessobjects.com/documentation/product_guides
 - Business Objects XI Release 2 > Business Objects Enterprise > InfoView User's Guide
- BusinessObjects Web Intelligence Training

Novell.[®]

Unpublished Work of Novell, Inc. All Rights Reserved.

This work is an unpublished work and contains confidential, proprietary, and trade secret information of Novell, Inc. Access to this work is restricted to Novell employees who have a need to know to perform tasks within the scope of their assignments. No part of this work may be practiced, performed, copied, distributed, revised, modified, translated, abridged, condensed, expanded, collected, or adapted without the prior written consent of Novell, Inc. Any use or exploitation of this work without authorization could subject the perpetrator to criminal and civil liability.

General Disclaimer

This document is not to be construed as a promise by any participating company to develop, deliver, or market a product. It is not a commitment to deliver any material, code, or functionality, and should not be relied upon in making purchasing decisions. Novell, Inc. makes no representations or warranties with respect to the contents of this document, and specifically disclaims any express or implied warranties of merchantability or fitness for any particular purpose. The development, release, and timing of features or functionality described for Novell products remains at the sole discretion of Novell. Further, Novell, Inc. reserves the right to revise this document and to make changes to its content, at any time, without obligation to notify any person or entity of such revisions or changes. All Novell marks referenced in this presentation are trademarks or registered trademarks of Novell, Inc. in the United States and other countries. All third-party trademarks are the property of their respective owners.

